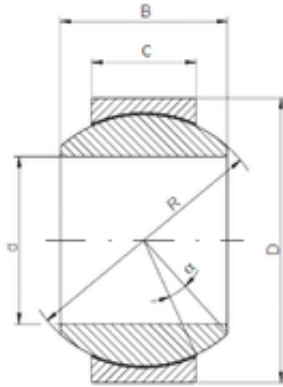




BEARING DRIVESHAFT, INC.

220 mm x 340 mm x 175 mm ISO GE 220
HCR-2RS plain bearings



Bearing No. GE 220 HCR-2RS

Size	220x340x175 mm
Bore Diameter	220 mm
Outer Diameter	340 mm
Width	175 mm
d	220 mm
D	340 mm
B	175 mm
C	100 mm
R	300 mm
Angle	16 °

GE 220 HCR-2RS Bearing 2D drawings and 3D CAD models