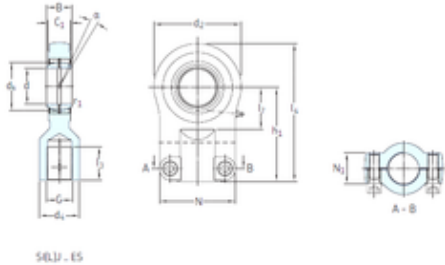




BEARING DRIVESHAFT, INC.

SKF SIQG63ES plain bearings



Bearing No. SIQG63ES

Bore Diameter	63 mm
d	63 mm
d2	134 mm
d4 max.	70 mm
dk	83 mm
h1	140 mm
l3 min.	64 mm
l4 max.	213,5 mm
l7 min.	61 mm
r1 min.	1 mm
B	63 mm
C1 max	53,5 mm
N max	116 mm
N1 max	40 mm
Thread (G)	M48x2 Tolerance 6H
Angle	4 °
Weight	6,8 Kg
Basic dynamic load rating (C)	255 kN

SIQG63ES Bearing 2D drawings and 3D CAD models