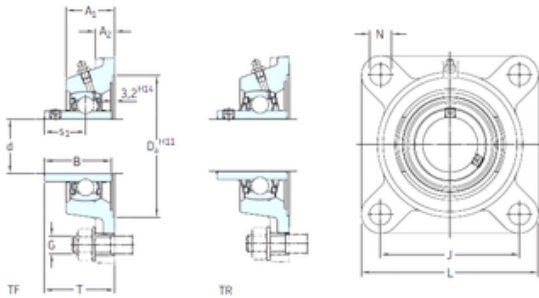




BEARING DRIVESHAFT, INC.

SKF FY 55 TF bearing units

Bearing No. FY 55 TF



FY 55 TF Bearing 2D drawings and 3D CAD models

Bore Diameter	55 mm
d	55 mm
Da	150,8 mm
s1	33,4 mm
A1	47,5 mm
B	55,6 mm
G	16 mm
J	130 mm
L	162 mm
N	18 mm
T	64,4 mm
A2	16 mm
Weight	3,6 Kg
Basic dynamic load rating (C)	43,6 kN
Basic static load rating (C0)	29 kN
Fatigue load limit (Pu)	1,25
Category	Flange Block Bearings
Inventory	0.0
Manufacturer Name	SKF
Minimum Buy Quantity	N/A
Weight / Kilogram	3.61
Product Group	M06110
Number of Mounting Holes	4
Mounting Method	Set Screw
Housing Style	4 Bolt Square Flange Block
Rolling Element	Ball Bearing



BEARING DRIVESHAFT, INC.

Housing Material	Cast Iron
Expansion / Non-expansion	Non-expansion
Mounting Bolts	16 Millimeter
Relubricatable	Yes
Insert Part Number	YAR 211-2F
Seals	M Seal
Housing Configuration	1 Piece Solid
Pilot Configuration	No Pilot
Inch - Metric	Metric
Long Description	4 Bolt Square Flange Block; 55MM Bore; 184MM Bolt Circle; 130MM Bolt Spacing; 1 Piece Solid; Set Screw Mount; Cast Iron; Ball Bearing; 55.6MM Length Thru Bore; Relubricatable; M Seal Seals
Other Features	Single Row Standard Duty Wide Inner Race Open End Has Flinger Y Bearing
Category	Flange Block
UNSPSC	31171501
Harmonized Tariff Code	8483.20.40.40
Noun	Bearing
Keyword String	Flanged
Manufacturer URL	http://www.skf.com
Manufacturer Item Number	FY 55 TF
Weight / LBS	7.94
Cartridge Pilot Depth	0 Inch 0 Millimeter
Bore	2.165 Inch 55 Millimeter
Nominal Bolt Circle Diameter Round	7.2 Inch 184 Millimeter
Length Thru Bore	2.189 Inch 55.6 Millimeter
Bolt Spacing	5.118 Inch 130 Millimeter



BEARING DRIVESHAFT, INC.

Cartridge Pilot Diameter	0 Inch 0 Millimeter
bore diameter:	55 mm
radial static load capacity:	29 kN
bolt center-to-center length:	130 mm
end type:	Open
overall length/diameter:	162 mm
length through bore:	64.4 mm
bore type:	Round
finish/coating:	Uncoated
mounting type:	Four-Bolt Flange
lubrication type:	Lubrication Fitting
housing material:	Cast Iron
series:	FY
locking device:	Set Screw
replacement bearing:	YAR 211-2F
expansion type:	Non-Expansion Bearing (Fixed)
manufacturer upc number:	7316577069177
radial dynamic load capacity:	43.6 kN
Housing material	Cast iron
D_a	150.8 mm
D_{b1}	122 mm
D_{b2}	134 mm
A	47.5 mm
A_1	16 mm
A_3	3.2 mm
A_5	34 mm
s_1	33.4 mm
R_G	1/4-28 UNF
R_1	32 mm
D_N	6.5 mm
SW_N	7 mm



BEARING DRIVESHAFT, INC.

G_N	1/4-28 SAE-LT
J_6	148 mm
J_7	45 mm
N_4	4 mm
Basic dynamic load rating C	43.6 kN
Basic static load rating C_0	29 kN
Fatigue load limit P_u	1.25 kN
Limiting speed	3600 r/min
Mass bearing unit	3.2 kg
Thread grub screw G_2	M10x1
Hexagonal key size for grub screw N	5 mm
Recommended tightening torque for grub screw	16.5 N · m
Recommended diameter for attachment bolts, mm G	16 mm
Recommended diameter for attachment bolts, inch G	0.625 in