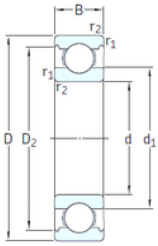




BEARING DRIVESHAFT, INC.



VA201



2Z/VA201



2Z/VA208



2Z/VA228

17 mm x 35 mm x 10 mm SKF 6003-2Z/VA201 deep groove ball bearings

Bearing No. 6003-2Z/VA201

6003-2Z/VA201 Bearing 2D drawings and 3D CAD models

Size	17x35x10 mm
Bore Diameter	17 mm
Outer Diameter	35 mm
Width	10 mm
d	17 mm
D	35 mm
B	10 mm
C	10 mm
d1	23 mm
r1 min.	0,3 mm
r2 min.	0,3 mm
D2	31,2 mm
Weight	0,038 Kg
Temperature -	30 to +250 °
Basic static load rating (C0)	3,25 kN
Category	Single Row Ball Bearings
Inventory	0.0
Manufacturer Name	SKF
Minimum Buy Quantity	N/A
Weight / Kilogram	0
Product Group	B00308
Enclosure	2 Metal Shields
Precision Class	ABEC 1 ISO P0
Maximum Capacity / Filling Slot	No
Rolling Element	Ball Bearing



BEARING DRIVESHAFT, INC.

Snap Ring	No
Internal Special Features	Polyalkylene Glycol/Graphite Mixture Filled
Cage Material	Steel
Internal Clearance	C0-Medium
Inch - Metric	Metric
Long Description	17MM Bore; 35MM Outside Diameter; 10MM Outer Race Width; 2 Metal Shields; Ball Bearing; ABEC 1 ISO P0; No Filling Slot; No Snap Ring; Polyalkylene Glycol/Graphite Mixture Filled Internal Special Fea
Other Features	Deep Groove Extreme Temperature Variant
Category	Single Row Ball Bearing
UNSPSC	31171504
Harmonized Tariff Code	8482.10.50.68
Noun	Bearing
Keyword String	Ball
Manufacturer URL	http://www.skf.com
Weight / LBS	0.041
Outer Race Width	0.394 Inch 10 Millimeter
Bore	0.669 Inch 17 Millimeter
Outside Diameter	1.378 Inch 35 Millimeter
Inner Race Width	0 Inch 0 Millimeter
d_1	23 mm
D_2	31.2 mm
$r_{1,2}$ min.	0.3 mm
d_a min.	19 mm
d_a max.	22.9 mm
D_a max.	33 mm
r_a max.	0.3 mm



BEARING DRIVESHAFT, INC.

Basic dynamic load rating C	6.37 kN
Basic static load rating C ₀	3.25 kN
Limiting speed	170 r/min
Limiting temperature T max.	250 ° C
Mass bearing	0.041 kg